



EG-M31A Networked Media Tank (NMT)



Quick Start Guide

A guide to the basic functions and features of the NMT.

Interface

On first starting the NMT, the following navigation options are available:

◇ **Media Source**

This page is used to select which source you want to stream content from. If a hard drive is connected it will be shown as the first item on the list.

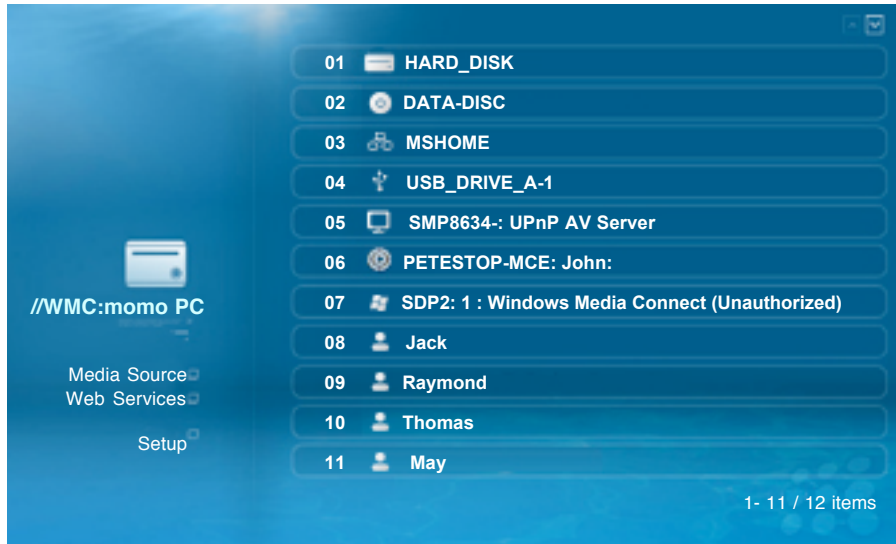


Figure 1.0 : Media Source screen

◇ **Web Services**

This page gives you access to Internet based services like the Media Service Portal(MSP), BitTorrent client status display and customizable URL's for your most frequently visited sites.

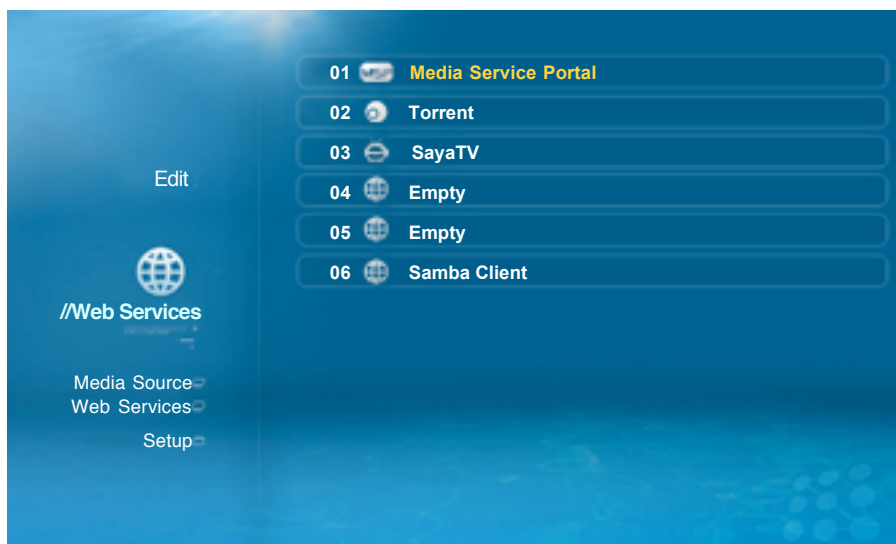


Figure 2.0 : Web Services screen

◇ Setup page

This page allows you to configure various settings for your device:

- Home - Takes you back to the Media Source page, or the last server you logged into.
- Preferences - General settings for the device
- Display - Display settings for digital/analogue output as well as aspect ratio control
- Network - Displays current IP information and allows configuration of network settings
- Media Server * - Configure the NMT media servers
- Torrent * - Configure settings for the NMT BitTorrent client
- Maintenance - Displays the current device firmware version and options for firmware update and NMT morphing**

* Only available with HDD and NMT apps installed

** Refer to **Setting up the full NMT application suite** in Page 5 for more details

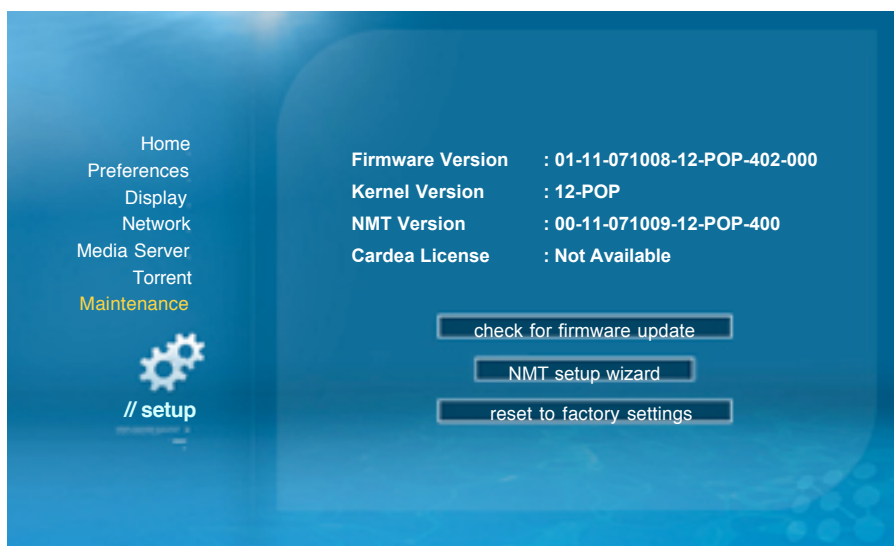


Figure 3.0 : Setup Maintenance screen

Media Servers

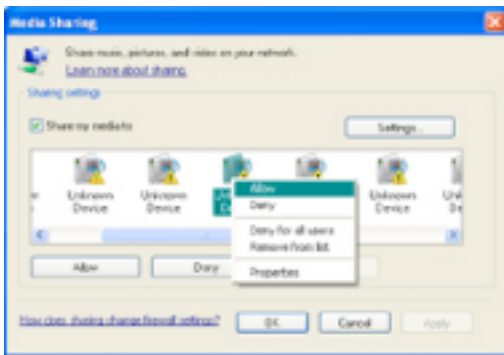
This section of the guide provides more detail on the various media servers available.

UPnP AV or DLNA Server

The NMT will automatically detect all available UPnP AV or DLNA compliant content servers on bootup and list them on the Media Source page. No additional setup is necessary on the NMT itself. Some servers may require additional authorization configuration on the server side, such as the WMP-NSS described next.

Windows Media Player Network Sharing Service (WMP-NSS)

To enable WMP-NSS sharing to the NMT, the NMT must first be authorized. From the WMP-NSS application, select the following menu options: Options->Library->Configure Sharing. Click the checkbox next to the "Share my media to" menu item. You should now have a list of detected devices to choose from on the menu below. Selecting a listed device and Right Clicking on it will show you a list of options. Select Properties to view details about each device. Find the device that matches the MAC address of your NMT and select the "Allow" menu item.



Note: The NMT's MAC address can be found from the NMT's Setup->Network page. It will be listed under the "Ethernet Configuration" heading.

Figure 4.0 : Media Sharing screen

CE-HTML Server

provides a proprietary server for use with the NMT. Simply install the server available for download at the following link:

<http://www.networkedmediatank.com/download/myihome.html>

Once installed, the server should be automatically detected by the NMT and added to the Media Source page list.

◇ **Third Party HTML-based Servers**

Due to the NMT's support for HTML based media stream extensions, there are many open-source third party servers that are compatible with the NMT. Some popular examples are:

WizD (<http://wizd.sourceforge.net/>) and SwissCenter (<http://www.swisscenter.co.uk>)

◇ **Setting up the full NMT application suite**

The NMT allows for the installation of an optional hard disk drive (HDD) that opens up a range of extra functionality.

If your NMT does not already come with a pre-installed HDD, you can install your own HDD and enable full NMT functionality by following the steps below :

- 1) Turn OFF the NMT
- 2) Attach a HDD directly to the NMT and connect the molex power supply
- 3) Power on the NMT and go to the Setup->Maintenance page and select the "NMT setup wizard" option
- 4) Step through the NMT wizard to partition, format and install NMT applications on the HDD. You can download the application binary onto a USB thumbdrive and use that as the installation source. If you do not have the files to install the NMT applications available, you can opt to install the apps directly from the internet. Please make sure you have a internet connection available and that the NMT is connected to it.



Note: This step will DELETE ALL the data on your HDD

- 5) After reboot, most of the NMT applications will start up automatically. To manually adjust the settings for the NMT applications, go to the Setup page.

Networked Media Tank Functions



Note: The NMT's IP address can be found from the NMT's Setup-> Network page. It will be listed under the "Ethernet Configuration" heading.

◇ Samba Client

The samba client allows the NMT to access media/files from SMB shares on PCs on the network.

Usage Instructions:

- 1) Select the Web Services link from the NMT Media Source page
- 2) Select the Samba Client link on the right pane
- 3) Navigate to the workgroup->PC you wish to browse



Figure 5.0 : Samba Client screen

◇ **NAS (SMB server)**

This server allows a remote PC to access the locally installed HDD on the NMT as a SMB share.

Usage Instructions:

- 1) Click on Start->Run
- 2) Type "\\<NMT Hostname>" or "\\<NMT IP ADDRESS>" into the text box
- 3) To allow for easier accesses to your NMT NAS in future, you can choose to map the SMB share as a drive under your "My Computer" folder of your PC. To do this:
 - a) Type "\\<NMT Hostname>" or "\\<NMT IP ADDRESS>" into the text box. Alternatively you can go to "My Network Places", click on "View workgroup computers", browse and select your NMT device.
 - b) Right click on the shared folder and select "Map Network Drive".

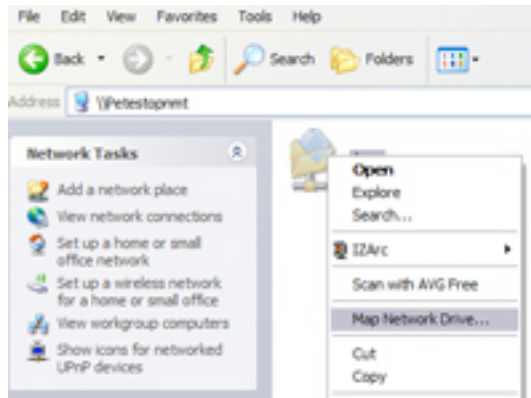


Figure 6.0 : Map Network Drive screen

- c) Select the drive you want your NMT shared folders to be represented.

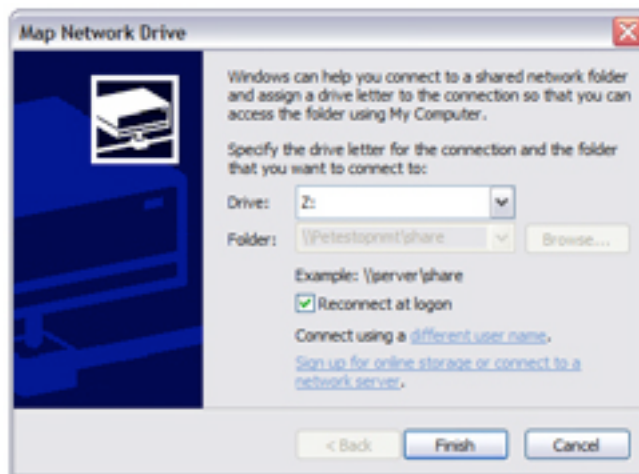


Figure 7.0 : Map Network Drive dialog screen

- d) The mapped drive should appear in "My Computer".

◇ BitTorrent downloader

A BitTorrent client for direct download to the internal HDD.

Usage Instructions:

- Torrents can be managed by either clicking the Web Services->Torrent links from the NMT, or using a web browser on your PC and going to the following URL :
http://<NMT IP ADDRESS>:8883/torrent/bt.cgi



Figure 8.0 : Torrent downloader page screen

- Alternatively, for Windows XP, you can go to Start->My Network Places->Network Tasks. Select the 'Show Icons for networked UPnP devices' option. The NMT will show up with its hostname. Double clicking on the icon will bring you to a page that will allow you to select the Torrent option.



Note: You can configure the Hostname from the Setup->Preferences->Hostname option on the NMT.

- You can upload torrent files and control the torrent download settings from this page.
- Torrent files are started automatically whenever the NMT browser encounters a **.torrent file**. You can also load .torrent file from USB storage devices.
- You can also configure some client settings from the Setup->Torrent page on the NMT.

◇ **myiHomeLite CE-HTML Server**

Proprietary HTML-based media server for streaming content directly from the NMT's HDD. The server name will be displayed as '<hostname> myihome'.

Usage Instructions:

- Under Setup->Media Server, you can see the current status of the media server. A running server will be detectable and accessible by all UPnP AV or DLNA compliant DMP.
- You can also access this server from a PC by going to the following link from a web browser : <http://<NMT IP Address>:8088/>

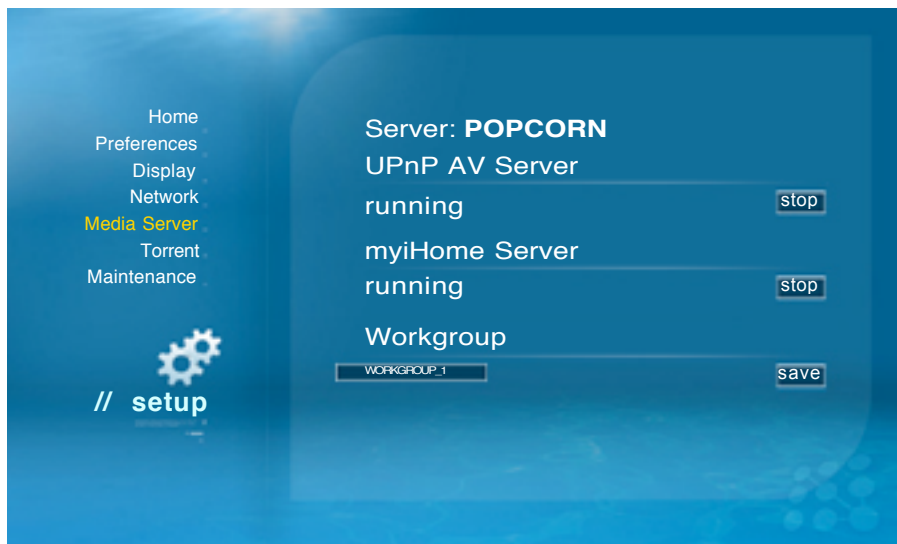


Figure 9.0 : Media Server Setup screen

◇ **myiHomeMS UPnP AV Server**

A standard UPnP AV server for streaming media directly from the NMT's HDD. The server name will be displayed as '<hostname>: UPnP AV Server'.

Usage Instructions:

- Under Setup->Media Server, you can see the current status of the media server. A running server will be detectable and accessible by all UPnP AV or DLNA compliant DMP. (Please refer to Figure 9.0)

◇ **FTP Server**

Allows easy remote access and management of the NMT's HDD. The server is always running by default after installing the NMT applications.

Usage Instructions:

- The FTP server runs on the default port (21). So just point your FTP client to <NMT IP Address>

Username: ftpuser

Password: ftpuser



Note: Currently the FTP username and password are not configurable.